

## Perth Close Raynes Park, SW20 0AJ

**£535,000 Leasehold - Share of Freehold**



**This superb 1319 sq.ft split level maisonette is extremely spacious and comprises TWO bedrooms, bathroom and adaptable accommodation throughout, off street parking, terrace and private garden with stretching views across the picturesque Malden Golf Course. Presented in fantastic condition throughout with high specification kitchen and bathroom, the property also offers a large LOFT space and benefits from being share of freehold.**

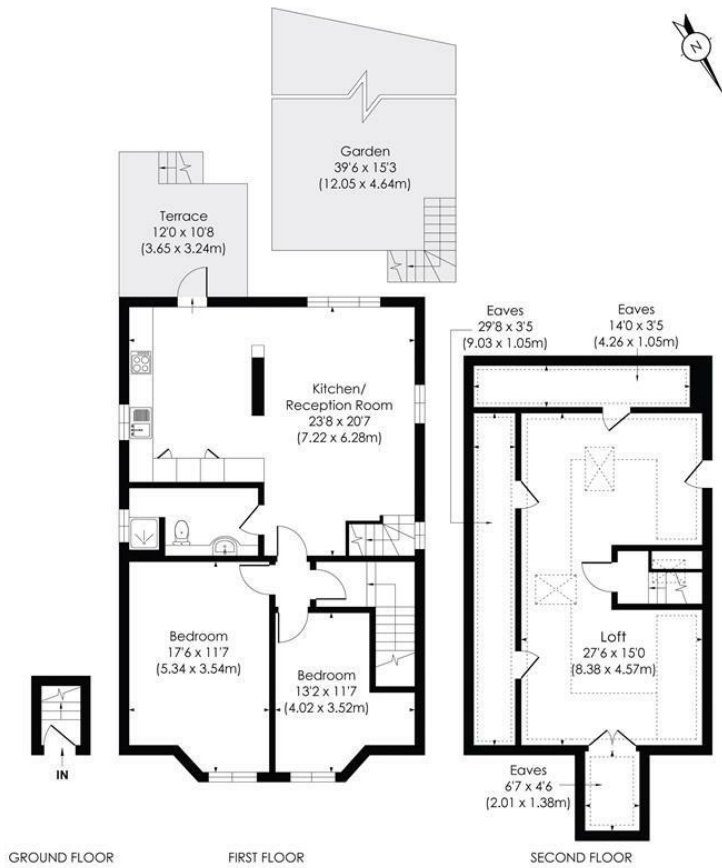
## PERTH CLOSE, SW20

Approx. Gross Internal Floor Area

**1058 Sq. ft./98.29 Sq. m (Excluding reduced height)**

**1319 Sq. ft./122.46 Sq. m**

**(Including reduced height, excluding Eaves)**

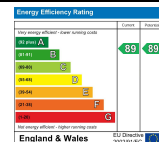


© Pixangle Property Marketing Ltd. info@pixangle.com Tel: 0208 870 2118

**pixangle**  
PROPERTY MARKETING

This floor plan has been prepared for the purpose of illustration only in accordance with the latest RICS code of measuring practice and is not to scale. All measurements and areas are approximate and whilst every effort has been made to ensure the accuracy of the plan contained here, no responsibility is taken for any error, omission or misstatement.

- Two Double Bedroom Maisonette
- Modern Kitchen
- Beautiful Golf Course Views
- Generous Garden & Decked Terrace
- Off Street Parking
- Share Of Freehold
- Lease Length - 993 Years
- No Onward Chain
- EPC Rating - B
- Council Tax Band - D



**For Free Mortgage Quote and Best Mortgage Rates, call Ellisons Mortgage Advisor on 0208 944 9595**



Although these particulars are believed to be correct, their accuracy is not guaranteed and they do not form part of any contract.

**Celebrating 30 years of successful Sales and Lettings in Merton**

